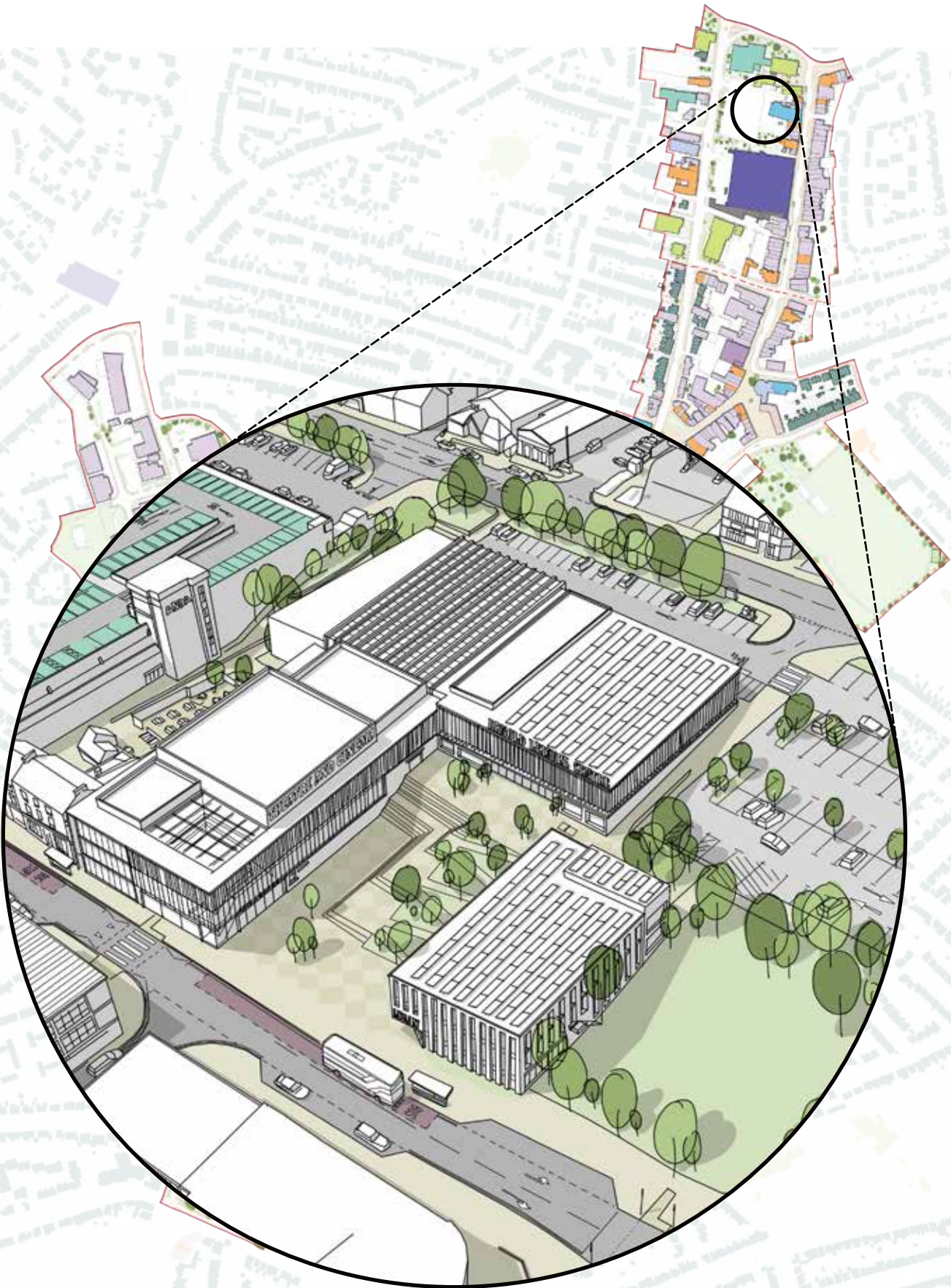


Ambition Arnold

Executive Summary - Aspirational Scheme

leonard design  WILLMOTT DIXON SINCE 1852

2025



Ambition Arnold | Gedling Borough Council | June 2025

Ambition Arnold: The Vision

The Ambition Arnold Vision sets out a series of aspirational ideas for how the vitality of the town centre could be improved.

The vision will address key challenges and lay out the groundwork for securing external funding that will be required to realise these ambitions. The vision prioritises accessibility, inclusion, and community pride, aligning with the Council's vision for a vibrant town centre, with the intention of placing the Council in a good position to attract investment. The vision concluded with 8 key ambitions, that could support the aspiration for Arnold:

01 Create a new cultural heart and public sector hub for the town.

02 Support and enhance the market.

03 Reinforce and support the traditional high street.

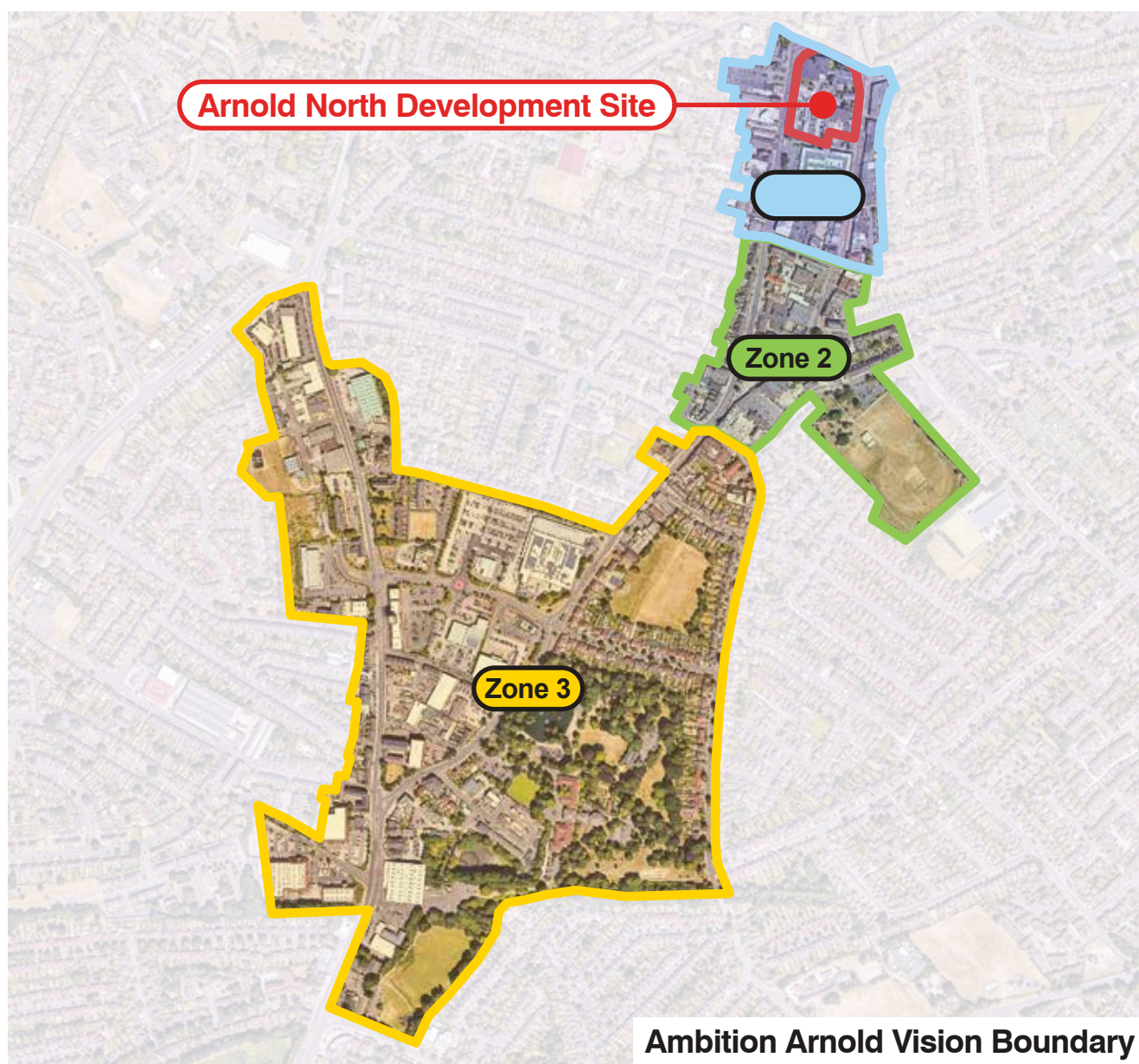
04 Respecting heritage and bringing the past into the future.

05 Provide more housing to the town centre that is modern, accessible and affordable.

06 Bring green space and children's play into the centre of town.

07 Bring back vibrancy to the street through street-led art.

08 Improve active travel links to the centre, and better link Front Street to High Street.



Ambition Arnold Vision Boundary

The public were consulted on the vision over a 6-week period from Monday 8th July 2024.

An online survey was accompanied by drop-in sessions at Arnold Library, where the aspirations for the town centre were shared and discussed with the public. Feedback was very supportive of the aspirations for an improved town centre. Some of the feedback and comments are provided on the right:

92% agreed or strongly agreed that Arnold town centre feels tired and is in

"I fully support your Ambition Arnold project. It is long overdue."

87% agreed or strongly agreed that it was important to providing **better pedestrian access and personal safety** across the town.

92% of respondents agreed or strongly agreed that **improving the appearance of the town** was very important.

77% agreed or strongly agreed that it was important to expand and improve the **health, leisure, swim and gym facilities** in Arnold town centre.

"Focus must be on youth, there is nothing for them to do, that's why we have a lot of antisocial behaviour."

Arnold North Development Site

66% agreed or strongly agreed that the town centre should promote the **identity of Arnold** through its people (artwork, murals, community arts projects, events, and activities for example).

69% agreed or strongly agreed that it was important to have **a more modern library** with up-to-date facilities, cultural and learning opportunities for the whole community.

'Arnold is a nice place to live but sadly many places have become tired and in need of repair, it would be great to see Arnold Town centre refreshed and rejuvenated.'

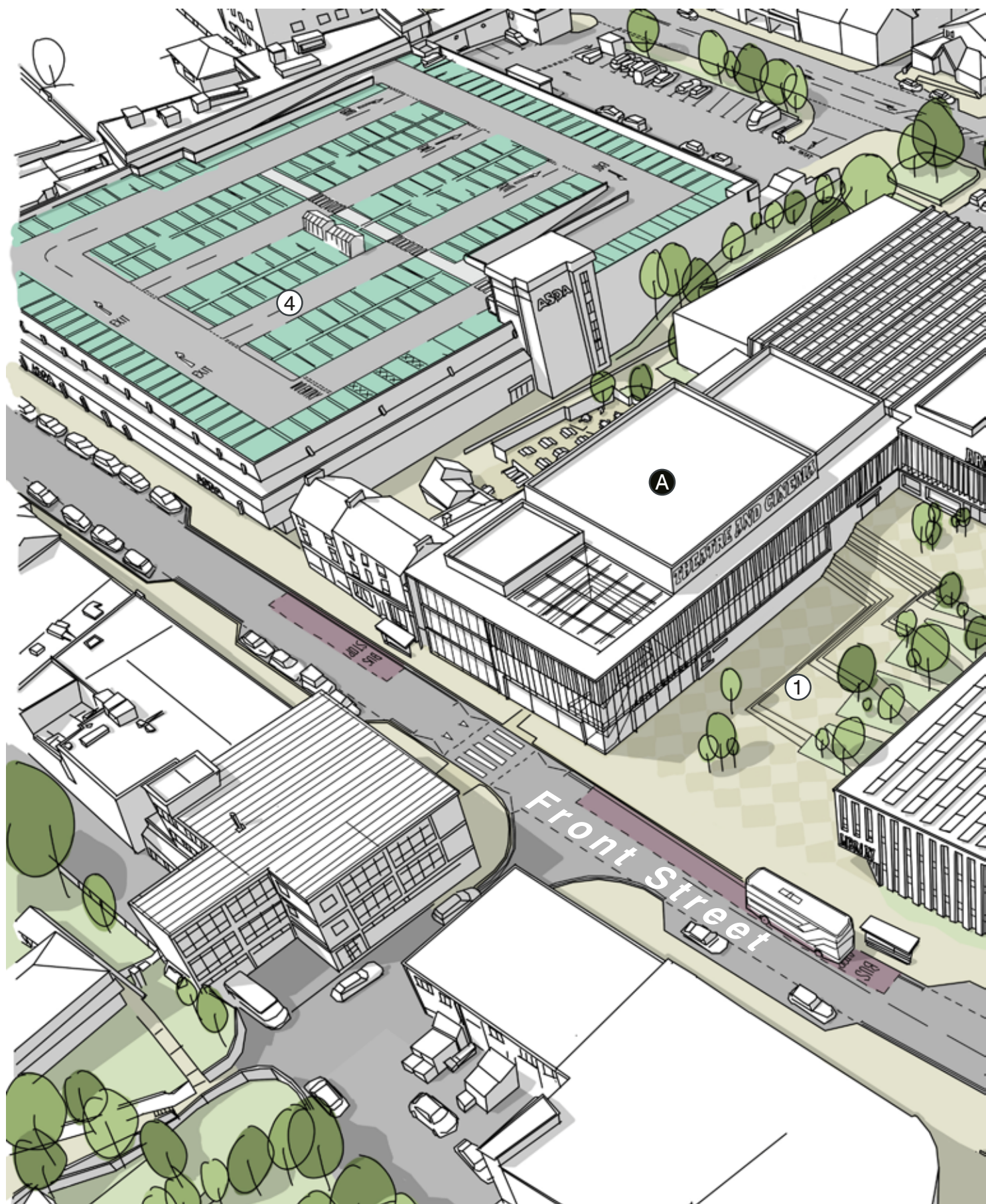
Ambition Arnold: The Vision





Aspirational Scheme: Could this provide for the future needs of the community?

Responding to the public engagement, and following the aspirational ideas from the vision, the illustrations below explore how this aspiration could be represented in the future; potentially providing 21st century facilities to serve the communities of Arnold and the wider Gedling Borough:



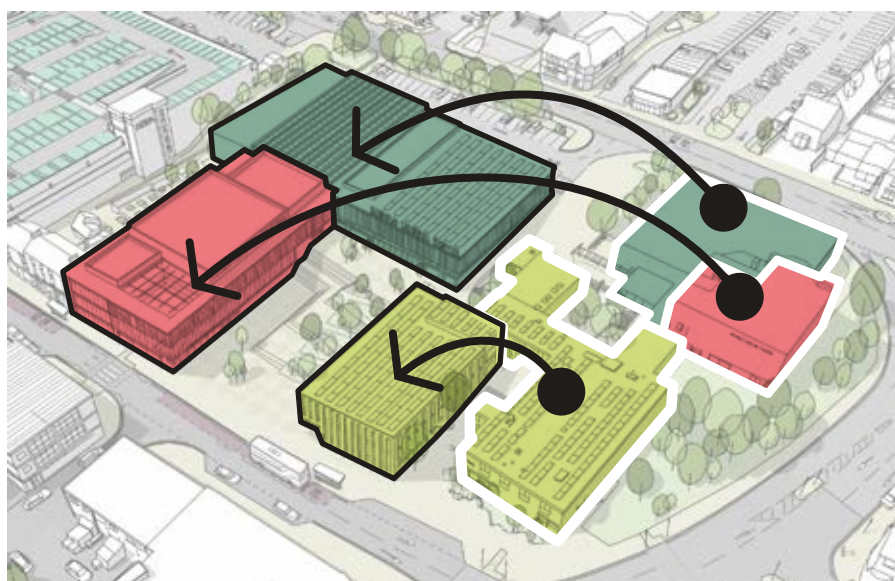
- A** Theatre, Cinema and Arts Venue
- B** Library
- C** Leisure Centre

- 1** Public square
- 2** High Street Car Park
- 3** Druids Tavern Car Park
- 4** ASDA

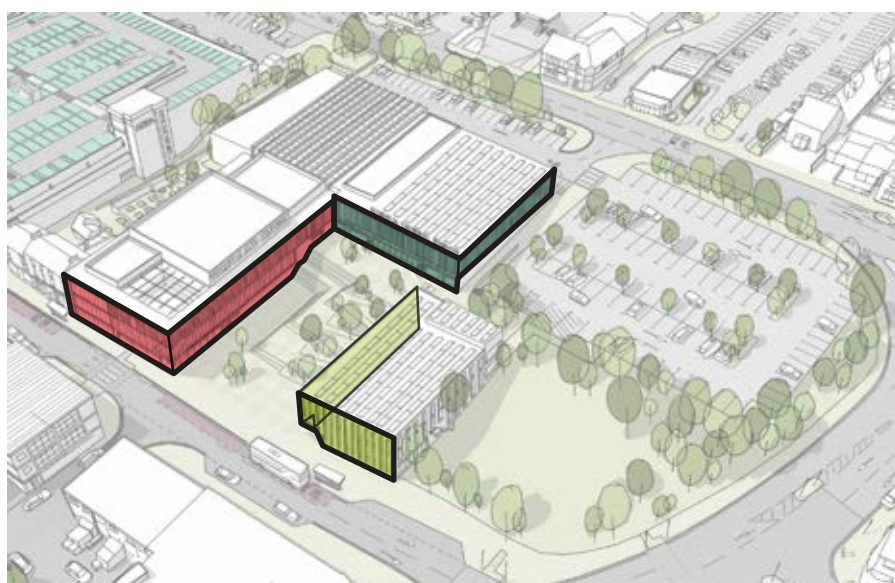


Aspirational Scheme: Could this provide for the future needs of the community?

What might be considered to achieve this?



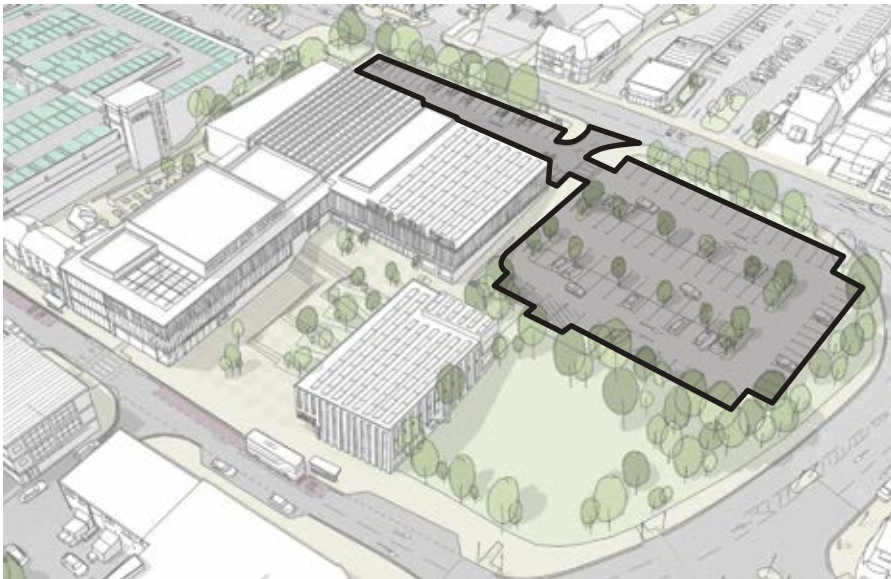
Ensure the Arnold library, leisure centre and Bonington Theatre remain open throughout any future construction.



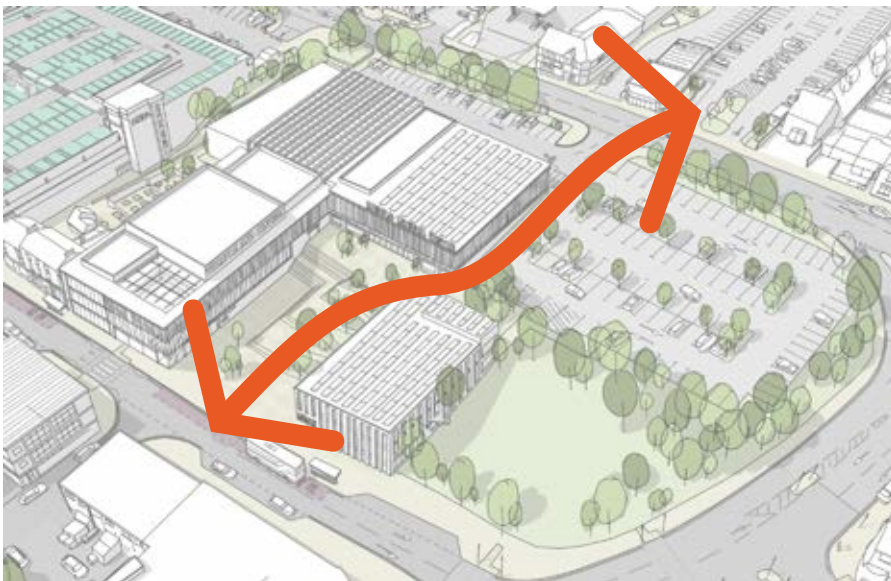
The public square would become a lively place, surrounded by a range of activities.



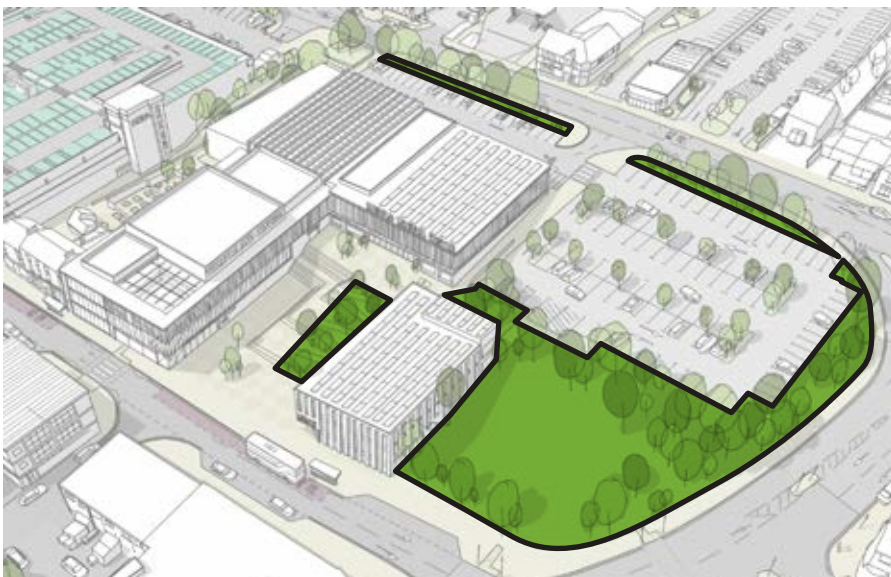
A new public space could define the character of this area, which would support the existing businesses.



Modern car parking provision would support new facilities and link to other car parks.



Potentially provide an accessible, step-free and direct access from High Street to Front Street.



New green spaces would improve the environment for everyone.

How could a future scheme be phased?

Any future scheme could be phased to ensure that the existing Bonington Theatre, Arnold Leisure Centre and Arnold Library, would continue to serve their users. The following are a suggestion of how this could be phased:

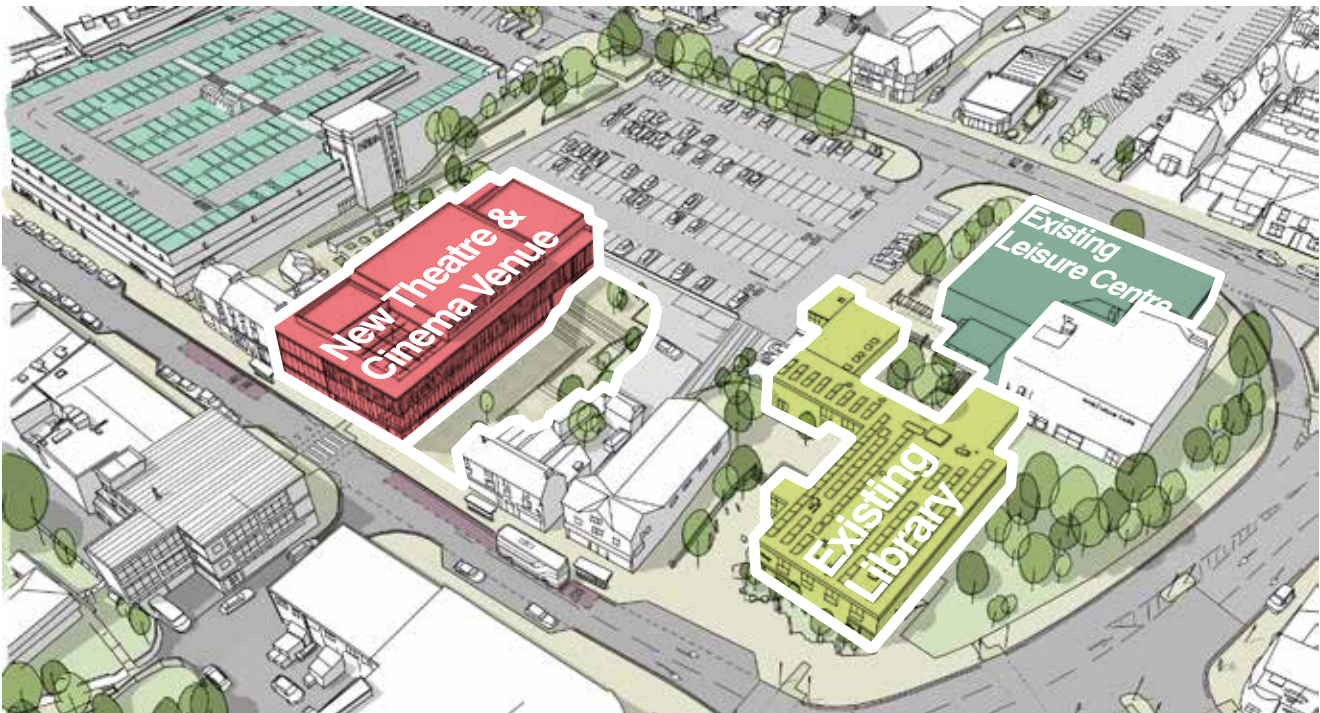
00 The existing site.



The existing site includes:

- Arnold Leisure Centre
- Bonington Theatre
- Arnold Library
- High Street Car Park
- The Former Working Men's Club
- Front Street retail units

02 What could Phase 1 look like?



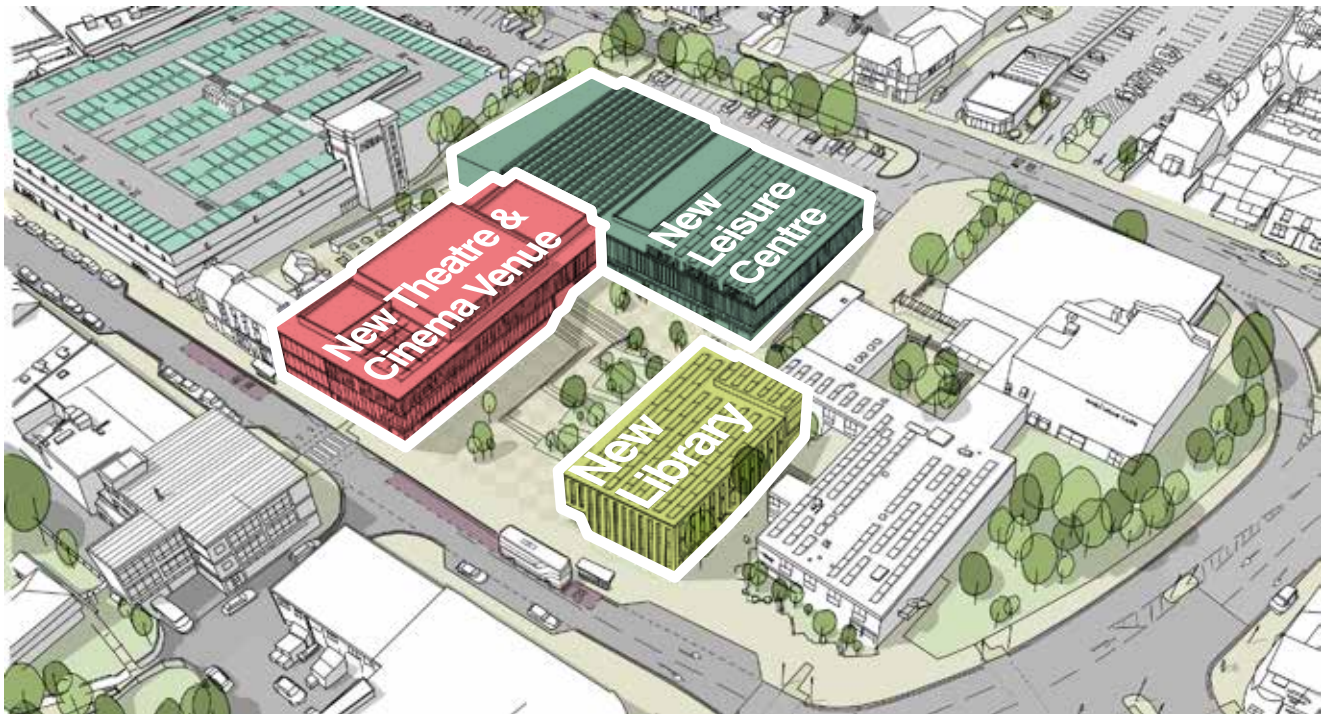
What would a First Phase look like?

- GBC could demolish the former Working Men's Club building and disused shops to the south, which could create opportunity for a First Phase.
- New public space could support the First Phase which could include a new Theatre & Cinema Venue with public access from Front Street.
- The existing Bonington theatre would transition to a brand new facility on completion of the First Phase.

How could a future scheme be phased?

Any future scheme could be phased to ensure that the existing Bonington Theatre, Arnold Leisure Centre and Arnold Library, would continue to serve their users. The following are a suggestion of how this could be phased:

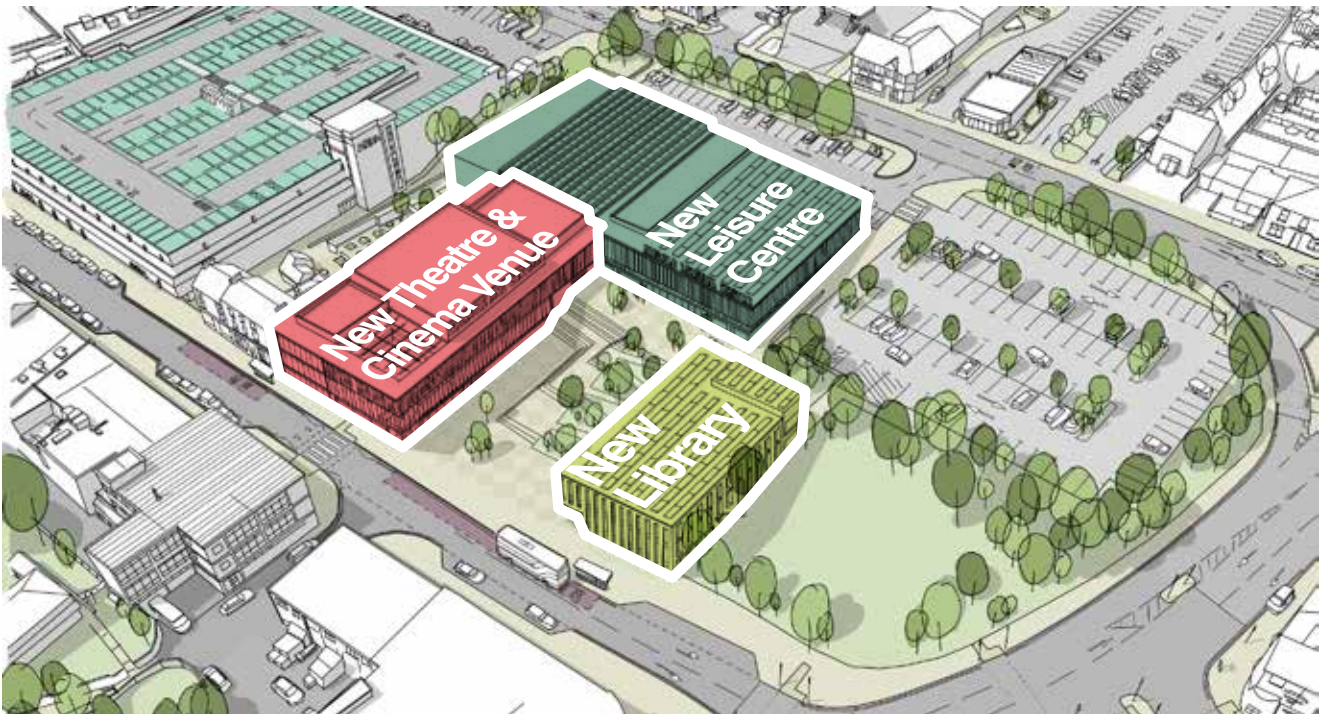
02 What could Phase 2 look like?



What would a Second Phase involve?

- The existing library and leisure centre would remain open throughout the duration of any construction to ensure continuity of service.
- A Second Phase would require demolition of some existing buildings which would provide areas for new facilities to come forward.
- The Opportunity in the Second Phase would be the construction of a new library and leisure centre situated around the new public space, that would already be serving the new Theatre and Cinema Venue.
- The Second Phase would bring completely flat access across the entire site.
- The delivery of a Second Phase would then lead to the removal of the existing library and leisure centre buildings.

03 How would a scheme be completed?



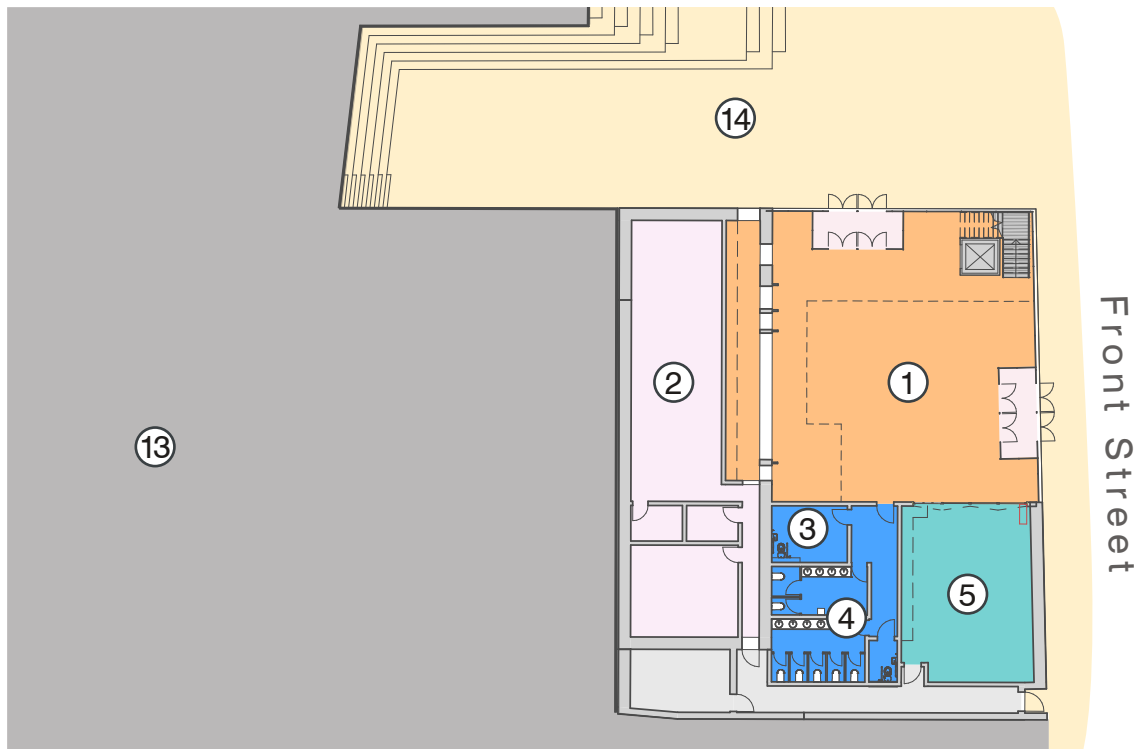
How could the scheme be completed?

- Once new facilities are operational, the existing library and leisure centre could be removed.
- An accessible route would be created, linking High Street Car Park to Front Street.
- A new library could benefit from an outdoor space to support children's learning and engagement.
- There could be opportunity to create other outdoor green spaces for the community.
- More modern car parking could be provided to support future facilities.
- Opportunity to improve access across High Street to the underused Druids Tavern car park.

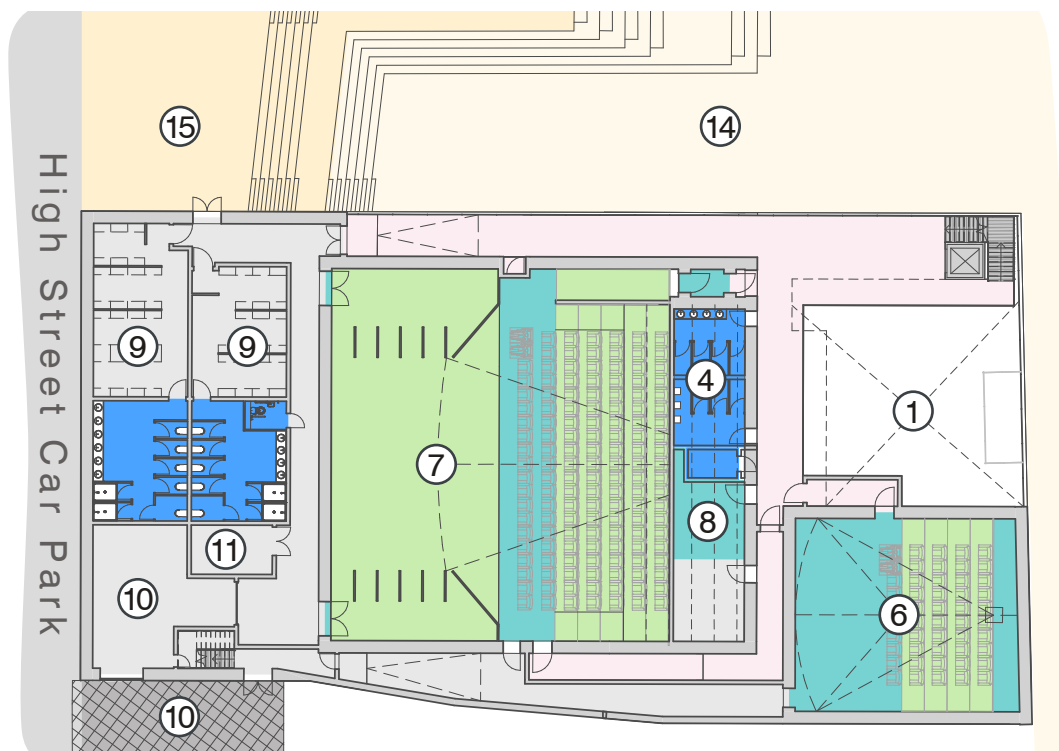
What might a new Theatre and Cinema Venue look like?

Phase 1 could include a new Theatre and Cinema Venue:

A modern, purpose-built theatre for live performances and cinema screenings, plus two additional smaller cinema screens, a multi-use room for a range of events and uses with a café on the ground floor with access to a new public square.

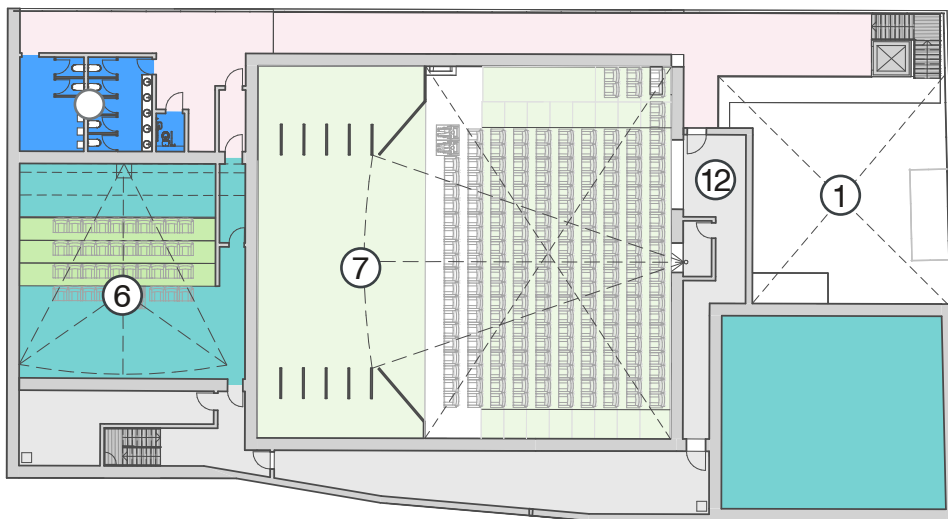


Ground Floor

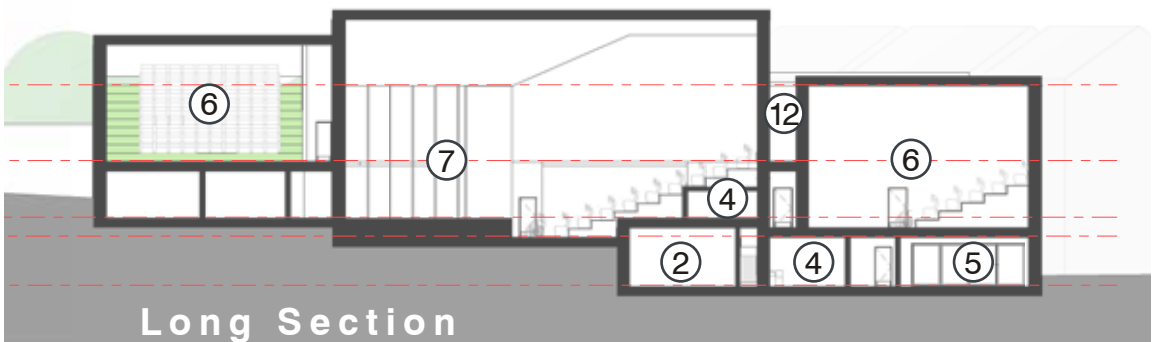


First Floor

- ① Cafe/foyer atrium, with bar, box office and external coffee counter
- ② Kitchen, storage, staff and back of house
- ③ Changing places WC
- ④ Male, female and accessible WCs
- ⑤ Multi-purpose performance room
- ⑥ Cinema (60 seater & 100 seater)
- ⑦ Multi-use auditorium
- ⑧ Neurodiverse screening room
- ⑨ Male and female dressing rooms and WCs
- ⑩ Service access direct to stage level
- ⑪ Green room
- ⑫ Projection room and technical room overlooking the stage
- ⑬ Existing car park
- ⑭ Level 0 public realm
- ⑮ Level 1 public realm



Second Floor



Long Section

What might a new Theatre and Cinema Venue look like?

Phase 1 could include a new Theatre and Cinema Venue: A modern, purpose-built theatre for live performances and cinema screenings, plus two additional smaller cinema screens, a multi-use room for a range of events and uses with a café on the ground floor with access to a new public square.

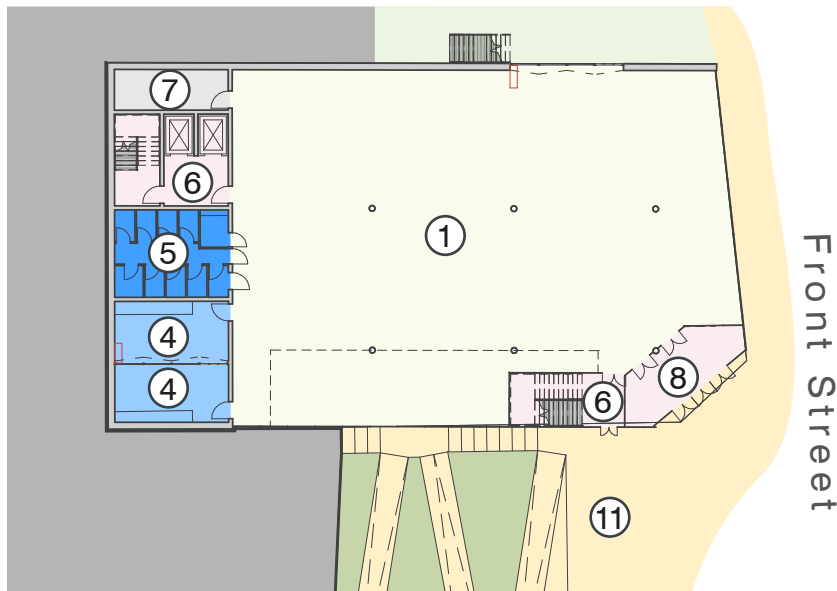


- ① Cafe/foyer atrium, with bar, box office and external coffee counter
- ② Kitchen, storage, staff and back of house
- ③ Changing places WC
- ④ Male, female and accessible WCs
- ⑤ Multi-purpose performance room
- ⑥ Cinema (60 seater & 100 seater)
- ⑦ Multi-use auditorium
- ⑧ Neurodiverse screening room
- ⑨ Male and female dressing rooms and WCs
- ⑩ Service access direct to stage level
- ⑪ Green room
- ⑫ Projection room and technical room overlooking the stage
- ⑬ Existing car park
- ⑭ Level 0 public realm
- ⑮ Level 1 public realm

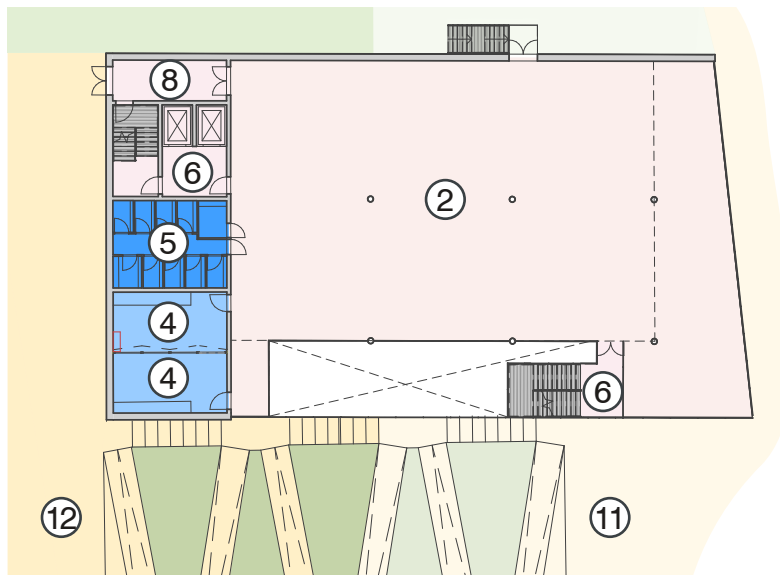


What could a new Library look like?

Subject to the agreement of Nottinghamshire County Council (and subject to suitable funding), a new library could be provided in a Second Phase of future development. It could provide three storeys of flexible space for a variety of library users, with dedicated spaces for children and adult learners, as well as space for community groups to use. Entrances could be provided off Front Street from the new public square, and off a future new High Street Car Park into a first floor entrance.

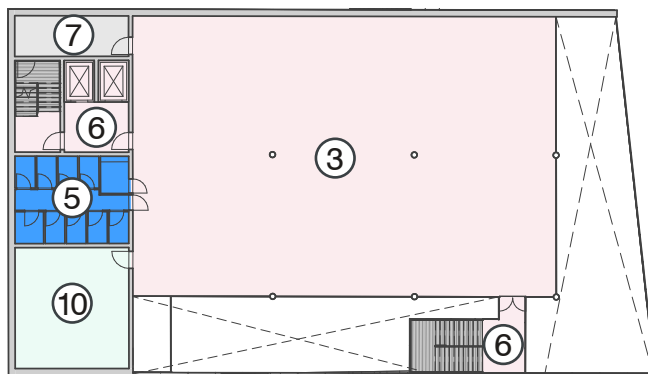


Ground Floor

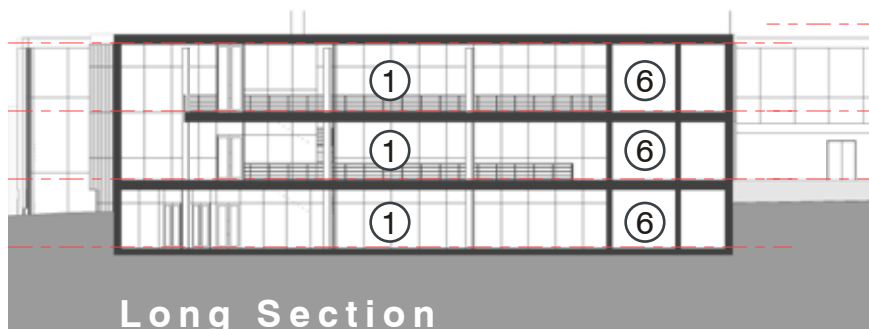


First Floor

- ① Ground floor open-plan, flexible library space
- ② First floor, open-plan, flexible library space
- ③ Second floor flexible library space
- ④ Meeting rooms
- ⑤ WCs
- ⑥ Vertical circulation (lifts and stairs)
- ⑦ Storage space
- ⑧ Entrance lobbies
- ⑨ External classroom space (accessed from ground floor)
- ⑩ Plant room
- ⑪ Level 0 public realm
- ⑫ Level 1 public realm



Second Floor



Long Section

What could a new Library look like?

Subject to the agreement of Nottinghamshire County Council (and subject to suitable funding), a new library could be provided in a Second Phase of future development. It could provide three storeys of flexible space for a variety of library users, with dedicated spaces for children and adult learners, as well as space for community groups to use. Entrances could be provided off Front Street from the new public square, and off a future new High Street Car Park into a first floor entrance.



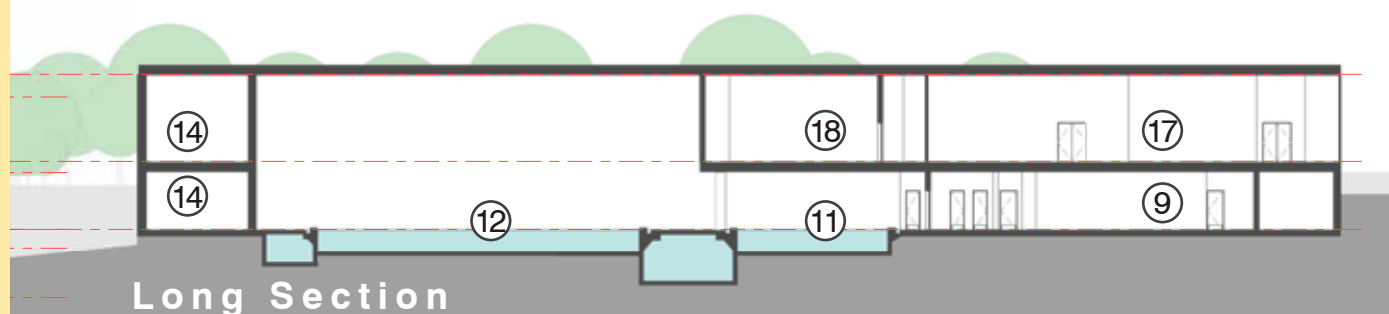
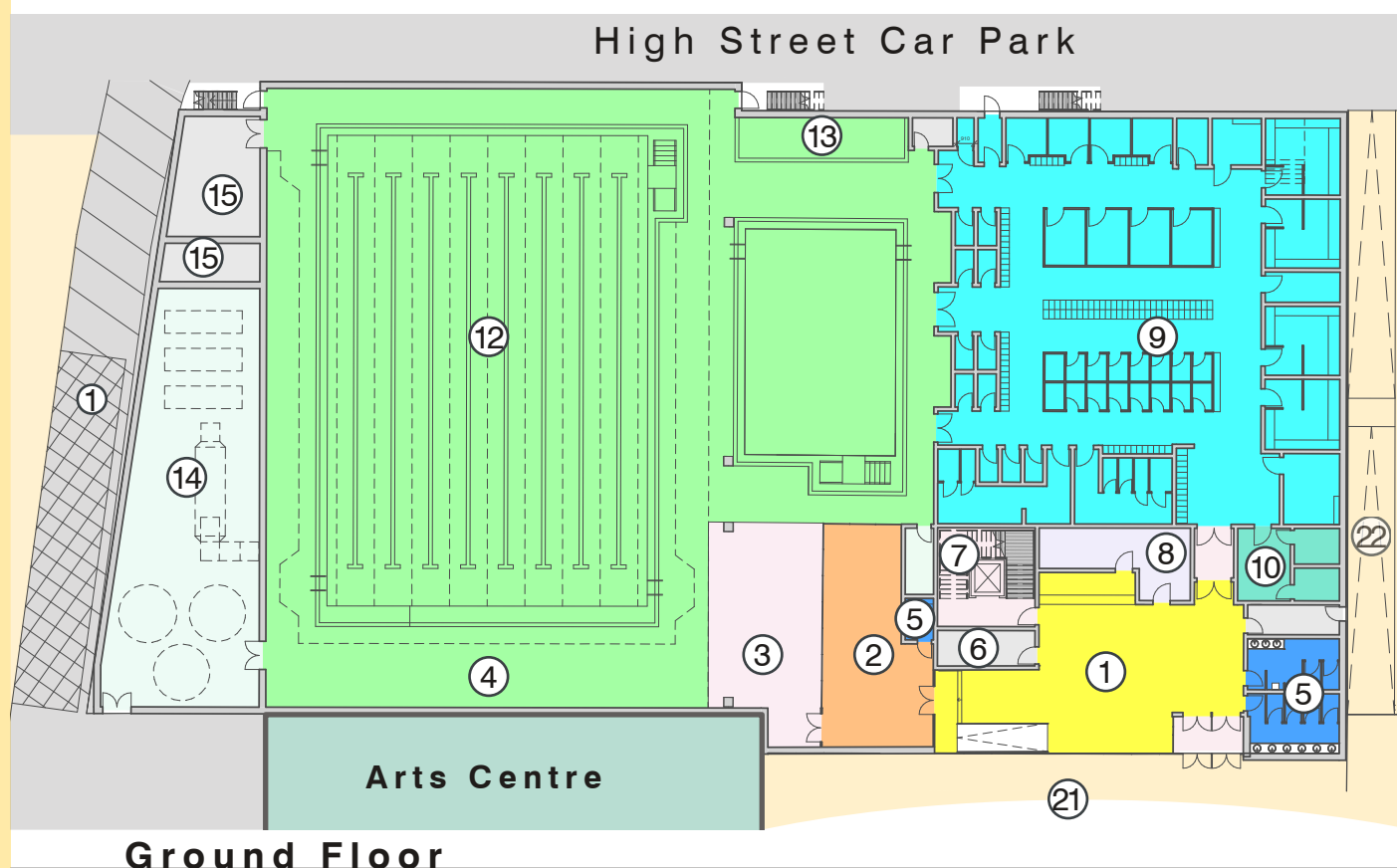
- ① Ground floor open-plan, flexible library space
- ② First floor, open-plan, flexible library space
- ③ Second floor flexible library space
- ④ Meeting rooms
- ⑤ WCs
- ⑥ Vertical circulation (lifts and stairs)
- ⑦ Storage space
- ⑧ Entrance lobbies
- ⑨ External classroom space (accessed from ground floor)
- ⑩ Plant room



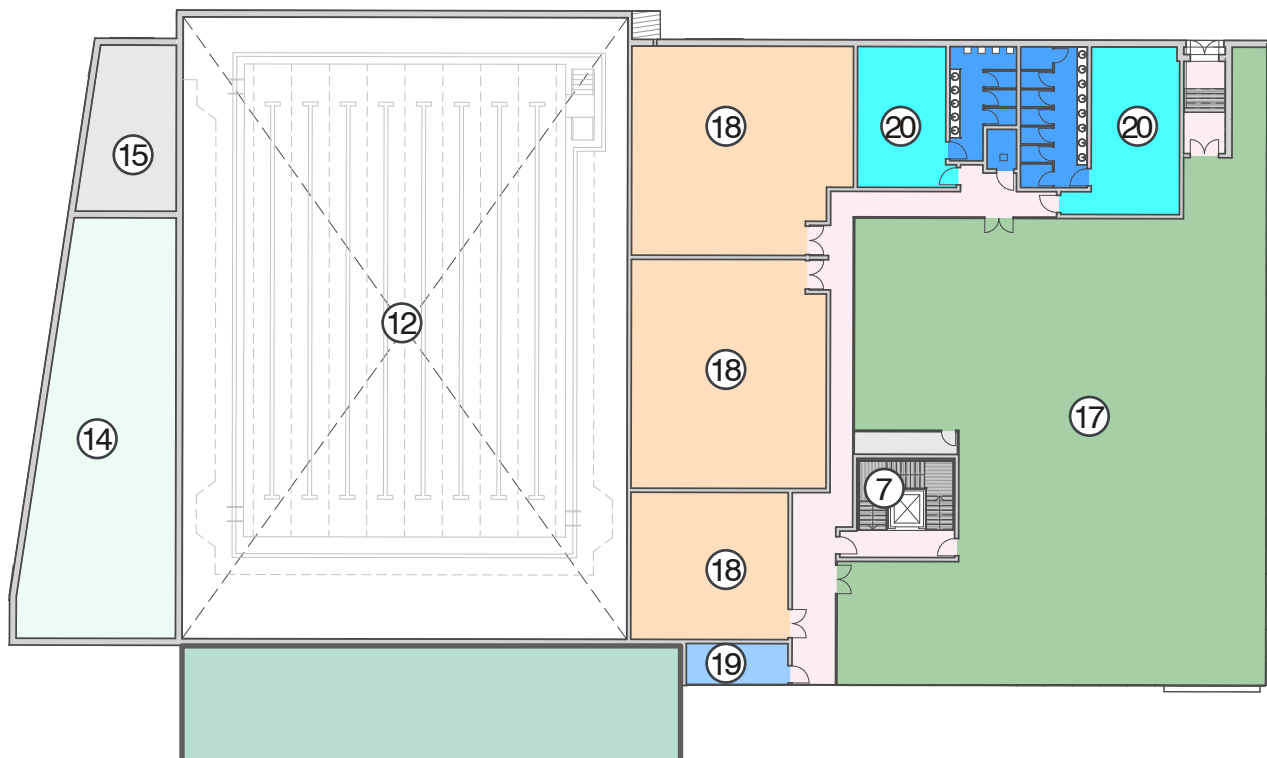
What could a new Leisure Centre look like?

A new leisure centre could also be provided in a second phase of future development and would be accessed either from High Street or Front Street, through the future public space. Facilities could include the following:

- Cycle parking
- Green space
- Child's play area
- New 8-lane swimming pool
- Secondary learner pool
- Toddler splash area
- Changing village with health & well-being suite
- Café area with view through to pools
- Poolside viewing
- Flexible gym space with three studios
- Consultation room
- Gym/studio changing facilities



- | | |
|--|---|
| ① Entrance foyer | ⑬ Toddler splash zone |
| ② Cafe seating area, viewing over the learner pool | ⑭ Plant room (with mezzanine) |
| ③ Pool balcony area, viewing over both pools | ⑮ Pool storage & separate chemical store (with mezz.) |
| ④ Main pool viewing area | ⑯ Service yard |
| ⑤ Male, female & accessible WCs | ⑰ Open-plan, flexible gym space |
| ⑥ Buggy storage | ⑱ Studios (x3) |
| ⑦ Vertical circulation to the gym (stair & lift) | ⑲ Consultation room |
| ⑧ Reception desk and staff office area | ⑳ Changing rooms & WCs |
| ⑨ Changing village | ㉑ Level 1 public realm |
| ⑩ Health spa (sauna, steam room, shower & ice) | ㉒ Accessible route to parking |
| ⑪ Secondary, learner pool | |
| ⑫ Main, 8-lane, pool | |



First Floor

What could a new Leisure Centre look like?

A new leisure centre could also be provided in a second phase of future development and would be accessed either from High Street or Front Street, through the future public space. Facilities could include the following:

- Cycle parking
- Green space
- Child's play area
- New 8-lane swimming pool
- Secondary learner pool
- Toddler splash area
- Changing village with health & well-being suite
- Café area with view through to pools
- Poolside viewing
- Flexible gym space with three studios
- Consultation room
- Gym/studio changing facilities

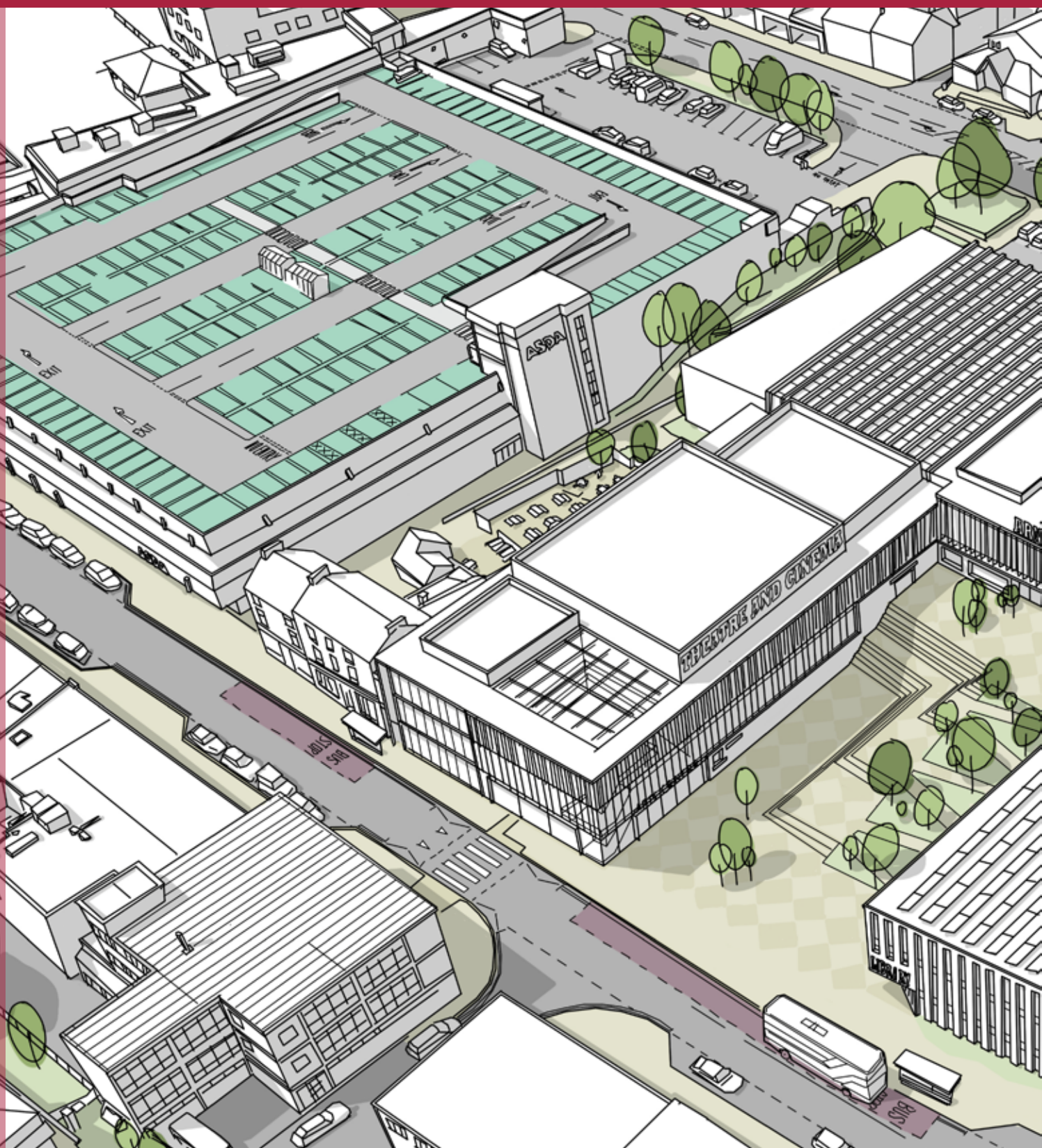


- | | |
|--|---|
| ① Entrance foyer | ⑬ Toddler splash zone |
| ② Cafe seating area, viewing over the learner pool | ⑭ Plant room (with mezzanine) |
| ③ Pool balcony area, viewing over both pools | ⑮ Pool storage & separate chemical store (with mezz.) |
| ④ Main pool viewing area | ⑯ Service yard |
| ⑤ Male, female & accessible WCs | ⑰ Open-plan, flexible gym space |
| ⑥ Buggy storage | ⑱ Studios (x3) |
| ⑦ Vertical circulation to the gym (stair & lift) | ⑲ Consultation room |
| ⑧ Reception desk and staff office area | ⑳ Changing rooms & WCs |
| ⑨ Changing village | ㉑ Level 1 public realm |
| ⑩ Health spa (sauna, steam room, shower & ice) | ㉒ Accessible route to parking |
| ⑪ Secondary, learner pool | |
| ⑫ Main, 8-lane, pool | |

⑪ ⑫



Ambition Arnold: Could these ideas represent the future of Arnold town centre?



Serving people, Improving

We are keen to hear your views on these aspirational ideas for the future of Arnold town centre. To provide your views, please follow this link:
<https://www.gedling.gov.uk/ambitionarnold>

Should you need this in an alternative format (e.g., braille, larger format, community languages) and for any other enquiries, please contact us at:
ECDEV@gedling.gov.uk.



Ambition Arnold: Could these ideas represent the future of Arnold town centre?





