

# Head of Communities & Leisure

**HSC01**  
**SMANBAND4**  
**37.00**  
**Head of Service Communities & Leisure**

**BSM01**  
**BAND09**  
**37.00**  
**Leisure Business Strategy Manager**

**COM03**  
**BAND09**  
**37.00**  
**Community Investment Manager**

**COM04**  
**BAND05**  
**37.00**  
**Community Relations Project Officer**

**LRS20**  
**BAND08**  
**37.00**  
**Sports & Health Development Officer**

**BSM01**  
**BAND09**  
**37.00**  
**Leisure Business Strategy Manager**

**LFA06**  
**BAND07**  
**37.00**  
**Fitness Promotion Officer**

**LFA10**  
**BAND07**  
**37.00**  
**Swim & Inclusion Promotions Officer**

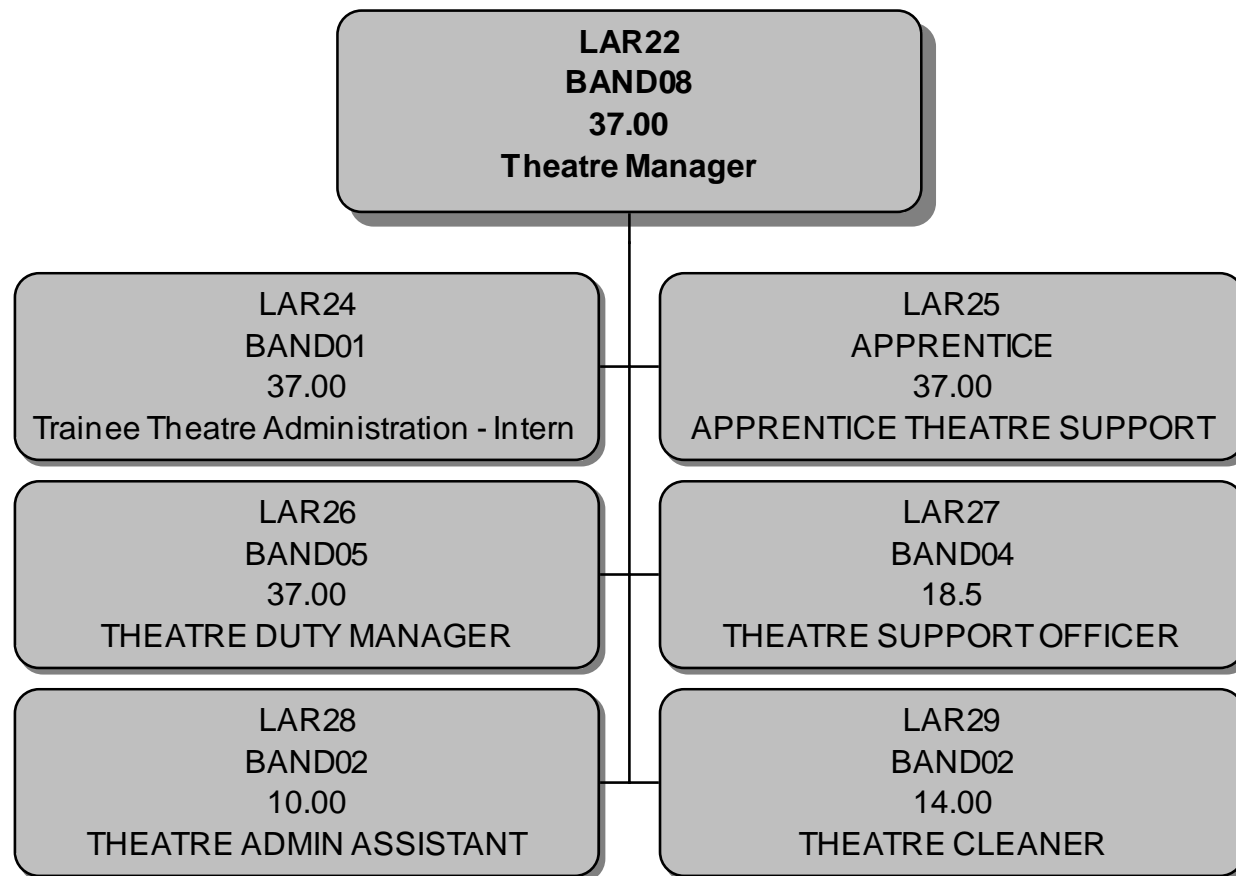
**LFA11/T**  
**BAND08**  
**37.00**  
**Temp Leisure Transformation Co-ordinator**

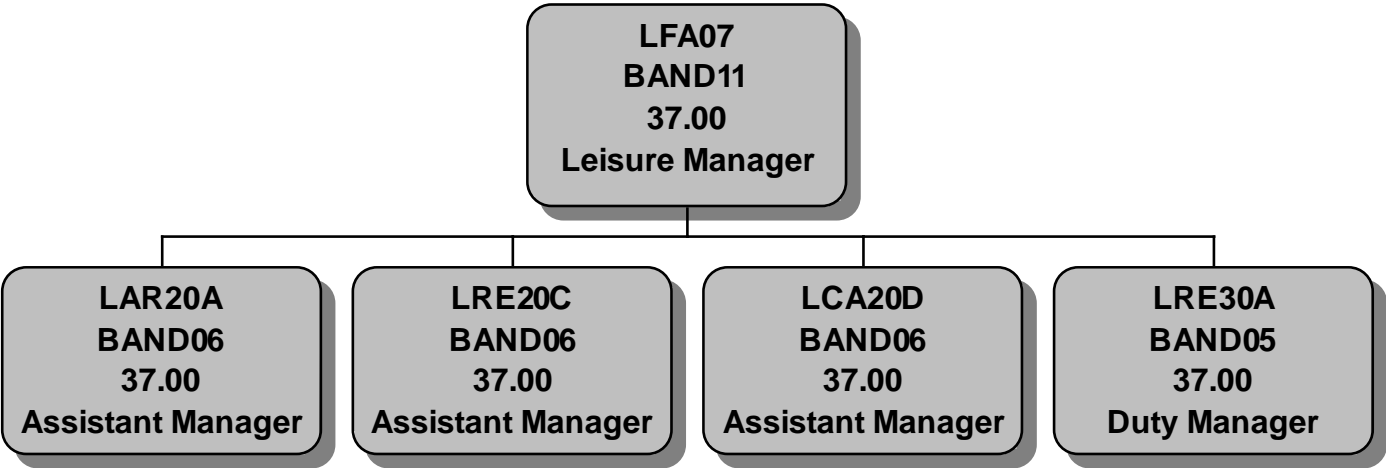
**LAR22**  
**BAND08**  
**37.00**  
**Theatre Manager**

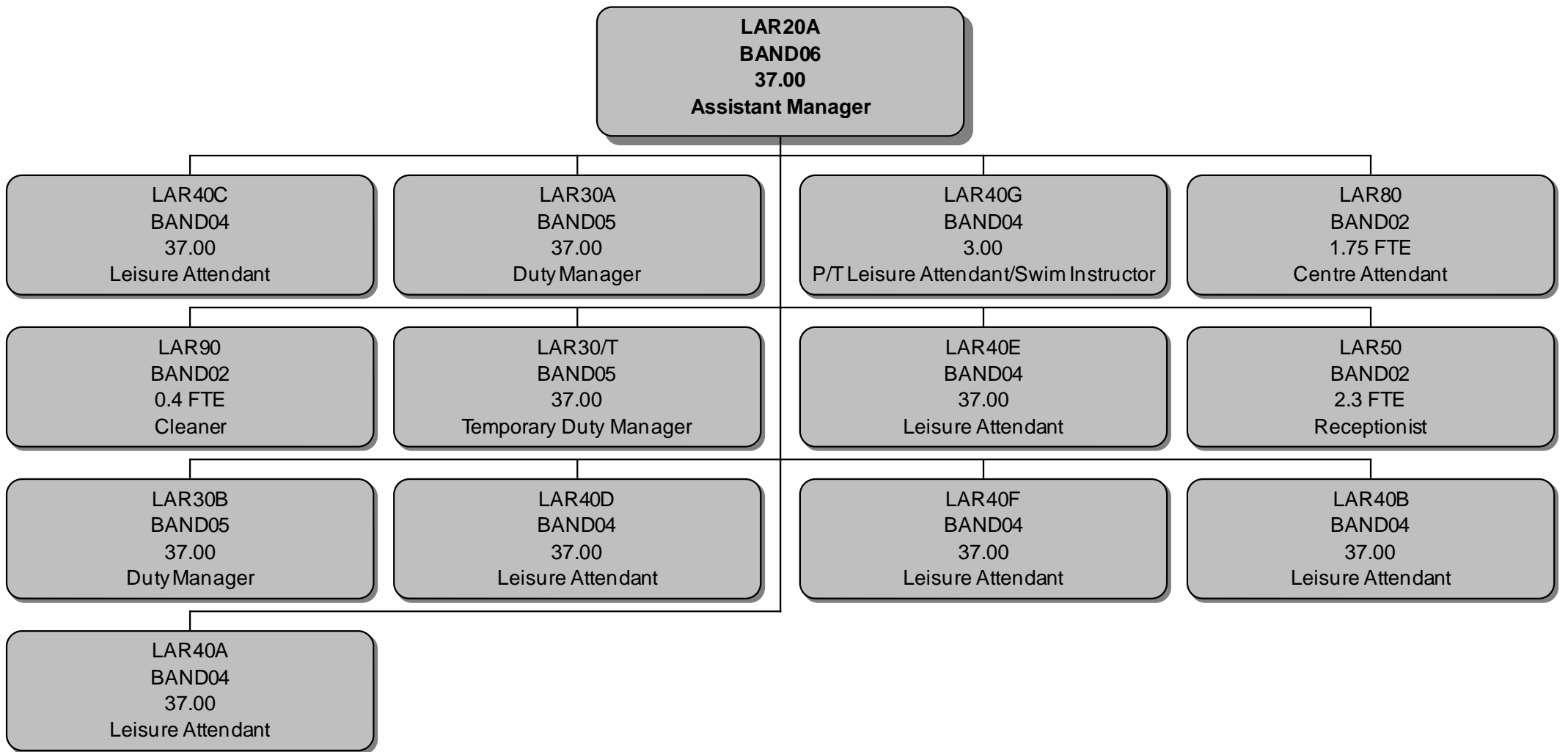
**LFA07**  
**BAND11**  
**37.00**  
**Leisure Manager**

**LCF01**  
**BAND11**  
**37.00**  
**Leisure Manager**









**LRE20C**  
**BAND06**  
**37.00**  
**Assistant Manager**

**LRE50B**  
**BAND02**  
**14.5**  
Receptionist

**LRE50E**  
**BAND02**  
**18.25**  
Receptionist

**LRE50F**  
**BAND02**  
**18.13**  
Receptionist

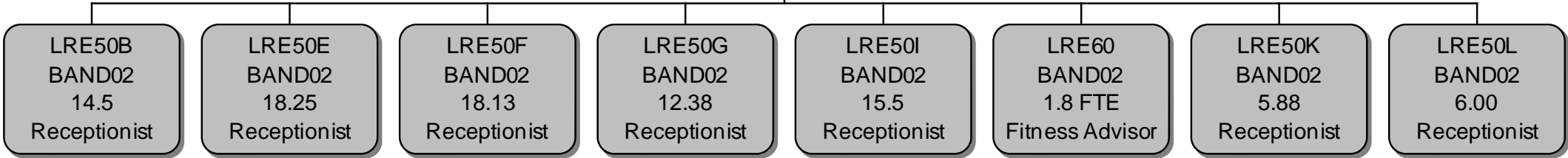
**LRE50G**  
**BAND02**  
**12.38**  
Receptionist

**LRE50I**  
**BAND02**  
**15.5**  
Receptionist

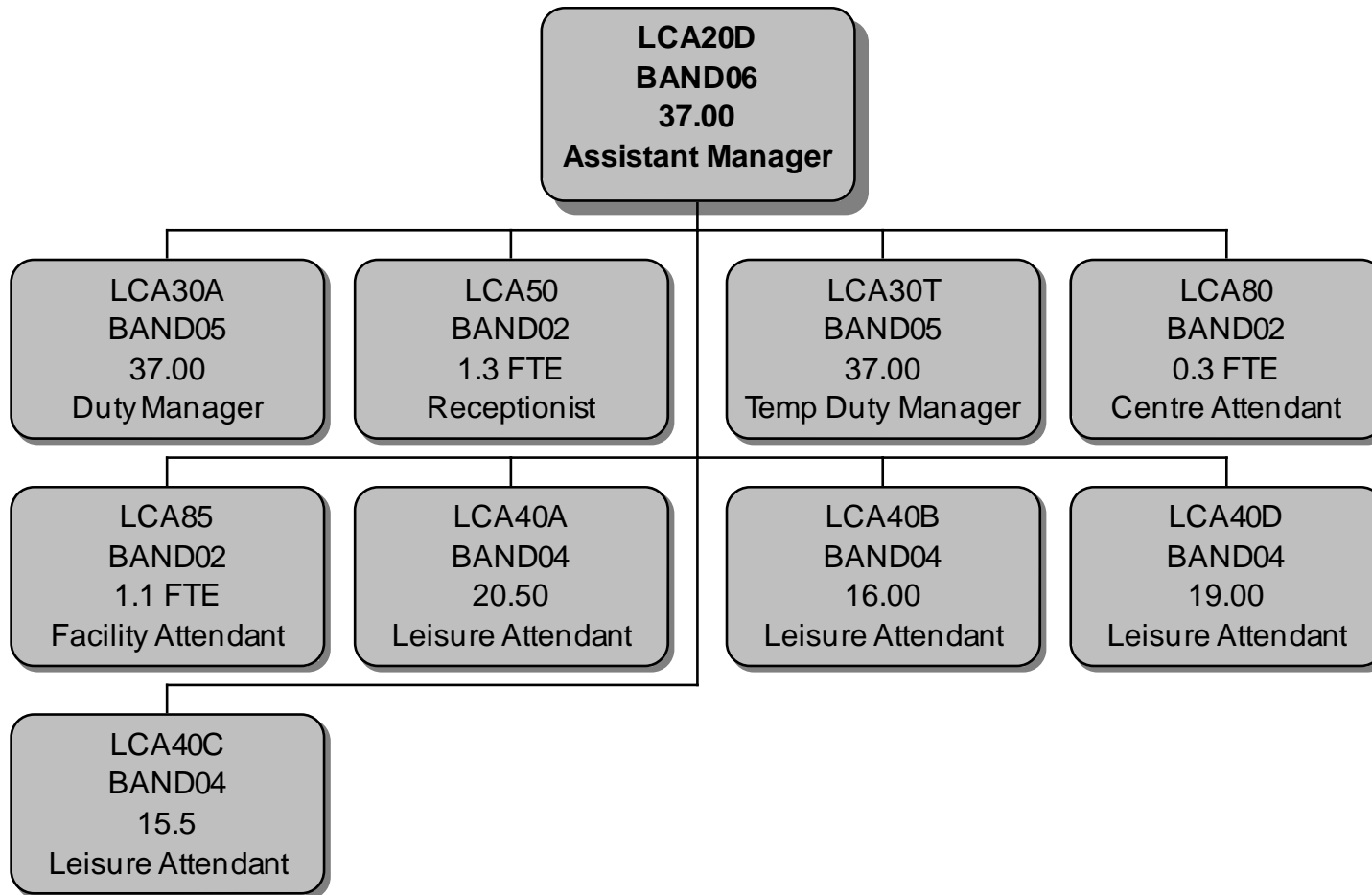
**LRE60**  
**BAND02**  
**1.8 FTE**  
Fitness Advisor

**LRE50K**  
**BAND02**  
**5.88**  
Receptionist

**LRE50L**  
**BAND02**  
**6.00**  
Receptionist

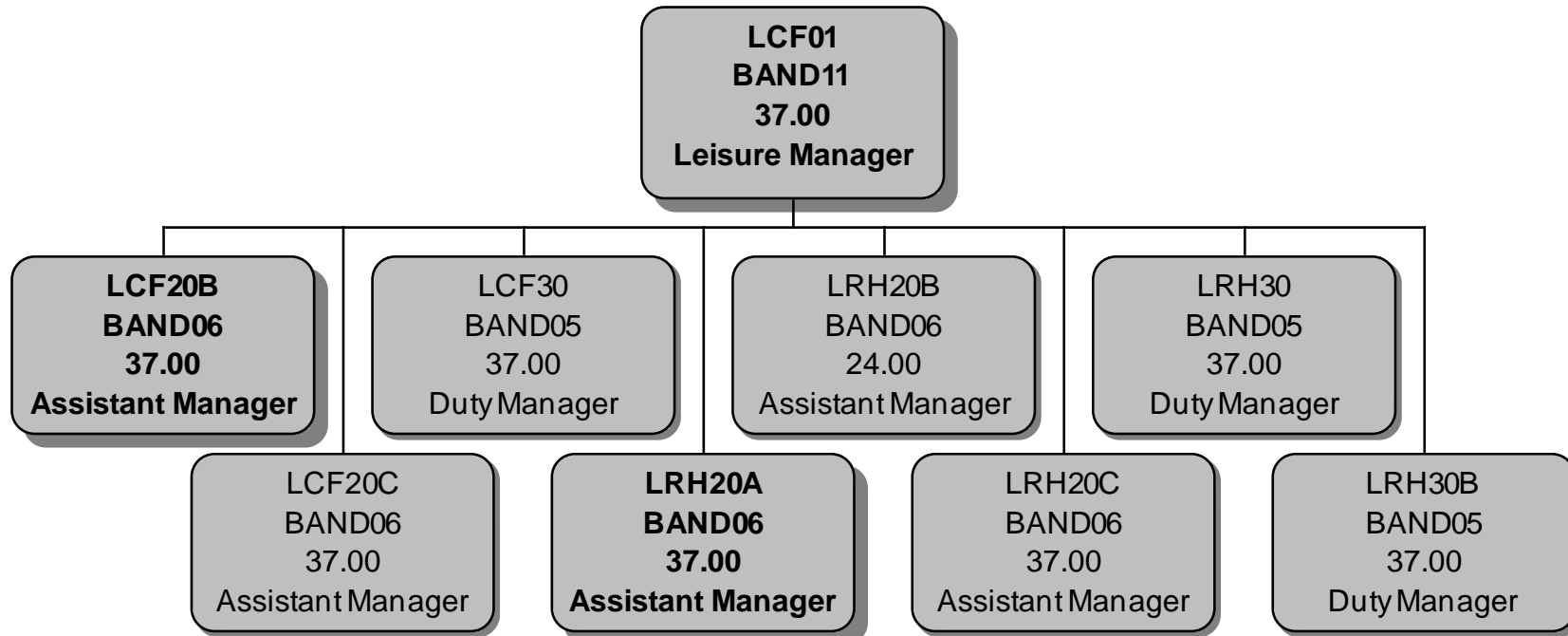






**LRE30A**  
**BAND05**  
**37.00**  
**Duty Manager**

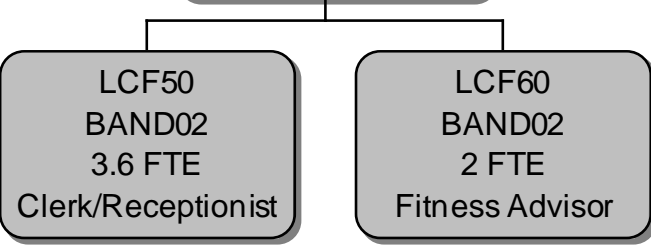
LRE90  
BAND02  
1.4 FTE  
Cleaner

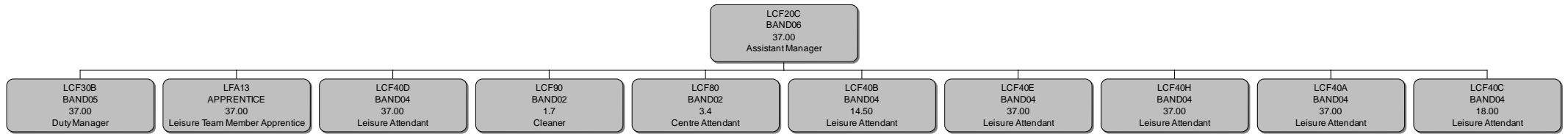


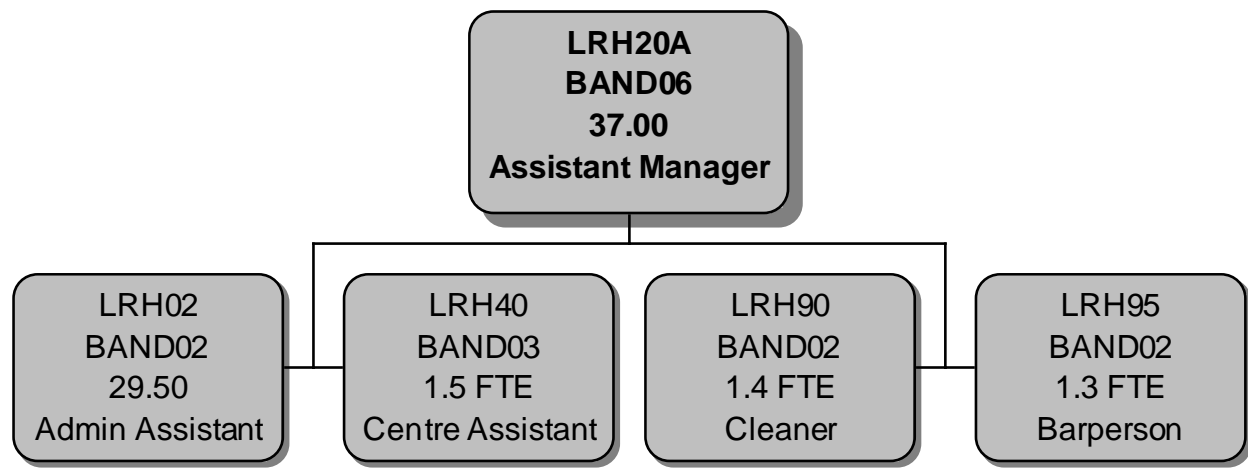
**LCF20B**  
**BAND06**  
**37.00**  
**Assistant Manager**

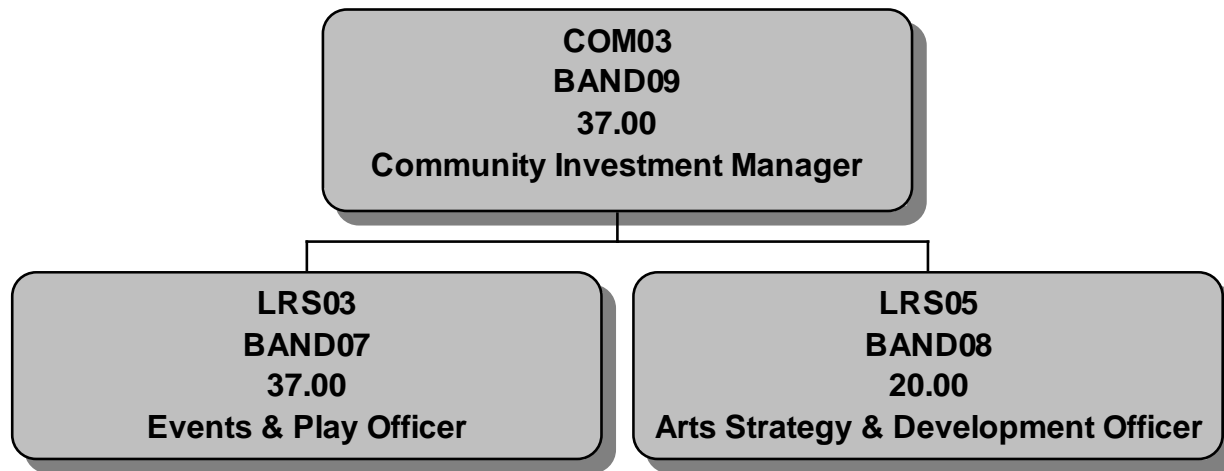
LCF50  
BAND02  
3.6 FTE  
Clerk/Receptionist

LCF60  
BAND02  
2 FTE  
Fitness Advisor









**LRS20**  
**BAND08**  
**37.00**  
**Sports & Health Development Officer**

**LRS10**  
**BAND05**  
**20.00**  
**Community Wellbeing Coordinator**

**LRS18**  
**BAND05**  
**24.00**  
**Community Health & Wellbeing Coordinator**

**LRS23/T**  
**BAND06**  
**37.00**  
**Temp Community Development Coordinator**

